

PRO-HEALTHCORE BED

-Free 90 day home trial!!

-Free Delivery!!

-Free Set Up!!

Pro-HealthCore Bed by Tempur-Pedic™

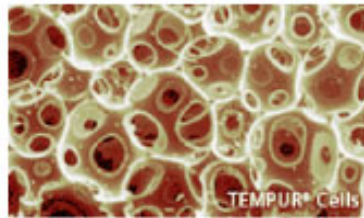
A TEMPUR-HD™ Comfort Layer

B HEAD-ZONE and FOOT-ZONE Support Layers- Soft formula TEMPUR® material, 18" in length from the head and foot of the mattress

C BACK-ZONE Support layer - softer TEMPUR® material

D BACK-ZONE Support layer- Firmer TEMPUR® material

E Shallow convolution profile top Base Layer



The Pro-HealthCore Bed by Tempur-Pedic

[E-mail this product to a friend](#)

The Pro-HealthCore Bed by Tempur-Pedic is a unique design, constructed with 3 individual Body-Zones, provides every part (zone) of your body correct therapeutic support, while delivering the superior comfort expected from Tempur-Pedic. The Back-Zone features a three-inch core with a softer layer, over a firmer layer of TEMPUR® material. Delivering progressive resistance, proper support, and correct spinal alignment— the surface that medical professionals prescribe as the best to help relieve chronic back pain. The Head-Zone and Foot-Zone are built with the softer formula of TEMPUR material to support and cushion these lighter areas in total comfort. This ingenious design also features our NEW TEMPUR-HD™. A reformulated, higher-density TEMPUR material providing an unmatched level of comfort and body-conforming support, with a rich luxurious feel. We also carry

Please call us at 732-681-2200. Please specify the Double (53" x 74"), Queen (60" x 80") or King (76" x 80") size mattress when calling.

This product is only available through medical professionals and is not available for purchase in major stores.

Tempur-Pedic Pillows Also Available. Stop by the office to try out one of our pillows for a few nights or see which one is the best for you.



TEMPUR® Material Features

- **Temperature & Weight Sensitive** - TEMPUR® material reacts to your body temperature and weight to conform exactly to every curve and angle of your body. By reacting to a very specific range of temperatures, the material becomes *soft where you want it and firm where you need it*, supporting your body in perfect alignment.
- **Energy Absorbing** - TEMPUR® material absorbs motion so that partners do not feel each other's movements. Each partner receives independent, edge to edge support from the mattress, and they will not roll together like they may on conventional mattresses. This creates the ideal atmosphere for deep, sound sleep.
- **Maintenance Free** - No flipping, rotating or turning of the mattress required! The permanent memory of TEMPUR® material allows it to return to its original shape time after time. The patented, one-sided mattresses never need to be flipped, and they're backed by a 20-year limited warranty.
- **Pressure Redistribution & Relief** - TEMPUR® material absorbs and redistributes your body weight across the entire surface area to relieve painful pressure points, reduce tossing and turning, and improve circulation.
- **Unique** - The formula for the TEMPUR® material is a trade secret known by only a few individuals. Competitors have tried to copy the TEMPUR® material, but they have never succeeded. The genuine TEMPUR® material is made using a proprietary formula and manufacturing process, and it's used exclusively in Tempur-Pedic™ brand products.
- **Recognizable** - Tempur-Pedic® is the #1 brand premium mattress, thanks to overwhelming consumer recognition and support. Tempur-Pedic® has the only mattresses and pillows recognized by NASA and certified by the Space Foundation, and they're recommended by over 25,000 medical professionals worldwide. Tempur-Pedic® mattresses have earned the Good Housekeeping Seal of Approval, the Consumers Digest Best Buy award, and the prestigious Ease-of-Use Commendation by the Arthritis Foundation.

Tempur-Pedic® Warranty Information

All Tempur-Pedic® mattresses ship with an amazing 20-year limited warranty. This warranty covers any deterioration in the cell structure of the materials that causes the mattress to have a visible indentation greater than three-fourths (0.75) of an inch, not associated with a sag in the foundation, box springs, or platform.



Call Us for ordering information: 732-681-2200 or www.lourochiropractic.com